



SAINT

SAINT PARISH PROFILE

Hope for the People of East London in Jesus' name

INTRODUCTION

SAINT is a diverse, dynamic and fast-growing church formed of multiple East London parishes. We have been commissioned as a resource church to serve young people, train diverse leaders and plant churches in partnership with a network of friends.

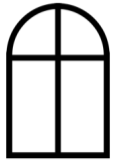
We aim to play our part in seeing a renaissance: restoring lives, revitalising churches and renewing culture. We meet online and in 11 services across 5 parishes with an average Sunday attendance of over 1000 adults and young people.



FOR THE
People OF
EAST
LONDON

SAINT.CHURCH

VISION & CULTURE



HONOUR

Church for the people.
Everyone invited,
everyone welcome to
come as you are.
Learning to be open to
God in word & sacrament,
hungry to learn.



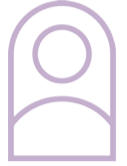
OPENNESS

We want to encourage
diverse and creative
leaders, empowering
each other to innovate
& give life. We try to
have fun, be brave & be
generous.



PROXIMITY

We're committed to God's
presence, working in
God's people, rooted in
place and parish.
We seek to be relationally
present to each other,
pursuing justice in love.



EMPOWERMENT

Honour God in worship
and each other in love,
living positively with
gratitude, pursuing
holiness & inspiring each
other to excellence.
Everyone a VIP.



WHO ARE WE LOOKING FOR?

SAINT is looking to appoint an ASSOCIATE PRIEST to continue to invest in the growth of ministry at ALL SAINTS WEST HAM. The ASSOCIATE PRIEST will work with the Rector, East Hub Lead Pastor and wider Senior Leadership Team to oversee the pastoral, spiritual, worship, cultural and prayer life of ALL SAINTS WEST HAM parish. This will include oversight of Sunday Services, pastoral care, core ministry activity, discipleship and evangelism. The ASSOCIATE PRIEST will be principally based in the parish of ALL SAINTS, but will work across SAINT locations as necessary.

We are looking for someone who...

- Will oversee and deliver vibrant and engaging Sunday services within the parish
- Has the ability to relate to, and care for, people from a variety of cultural, socio-economic, and generational backgrounds.
- Has a heart for mission and ministry in a diverse, urban context, and particularly serving people in need in our local community and reaching those outside the church with the hope of Jesus.
- Is committed to a tradition of contemporary worship, vibrant prayer, and the ministry of the Holy Spirit, but who is also comfortable holding together different traditions.
- Has a vision for the revitalisation of the local church in East London, and evangelism among unchurched people.
- Is an excellent bible teacher with a proven track record of preaching that is passionate, engaging and able to connect with a wide range of people
- Has great organisational skills and the experience to inspire, manage, and grow teams

CLERGY



Al Gordon is the Rector of SAINT and licensed Incumbent across all of our locations.



Nai Maxwell-Babatunde is the Associate Rector with a particular focus on leading our Hackney, Homerton and Shoreditch locations.



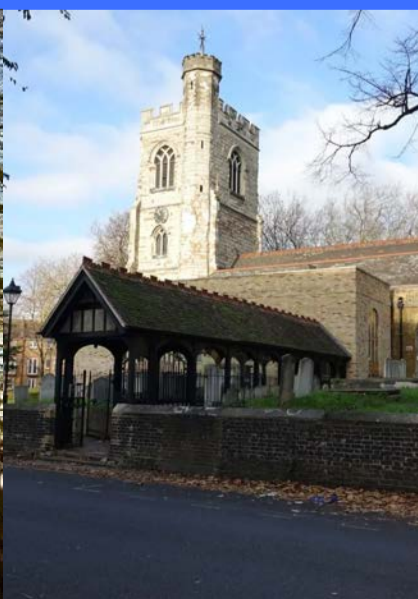
Steve Opie is the Lead Pastor & Training Incumbent with a particular focus on leading our Leyton and West Ham locations.

SITES & BUILDINGS

SAINT is one church made up of many parishes. We have church locations in the London Boroughs of Hackney, Newham and Waltham Forest. The five parishes that make up SAINT are as follows:

- The Parish of Hackney (Charity No. 1158545). Registered office: Hackney Church House, 1 Spiller House, Prodigal Square, E8 1FX. Hackney Church comprises the parish church (St John at Hackney), St Luke's Church, Hackney Church House and two vicarages.
- Hackney Church is the iconic Anglican parish church of Hackney, and has been a centre of Christian worship in the borough since 1275. Our vision is to see a renaissance through restoring lives, revitalising churches, renewing culture, in Jesus' name. To facilitate our ambitious vision, SAINT completed a once in a lifetime restoration of Hackney Church and its surrounding churchyard. This £6 million project has turned this iconic building into a world class music and events venue, with thanks to lottery funding. The space is designed to be a cathedral of creativity for church, music and unique experiences. Hackney Church is one of the largest venues in East London. The design team included internationally renowned architectural designer John Pawson CBE, architect Thomas Ford & Partners, with an immersive installation from Es Devlin OBE.
- The Parish of St Barnabas Homerton (Charity No. 1186331). Registered Office: St Barnabas Church, Homerton High Street, E9 6DL. Homerton Church comprises the parish church, Church of the Risen Christ, the Wally Foster Centre and two vicarages.
- The Parish of St Barnabas is based in Homerton and Clapton Park in Hackney, East London. Previously known as the Hackney Marsh Team Ministry, in November 2019 the parish changed its name and status to the single Parish of St Barnabas Homerton.

- The Parish of St Mary with St Edward & St Luke Leyton (Charity No. 1208111). Registered Office: St Mary's Church, 35 Church Road, E10 5JP. Leyton Church comprises the parish church, a parish hall and a vicarage.
- The site of St Mary's is the ancient parish church of Leyton, mentioned in the Domesday Book of William the Conqueror and with the earliest reference to a building on the site dating to 1182. The church has been extended many times throughout its history in order to make space for the growing local community and in 1749 they started planting churches in the local area. Today, Leyton Church is on a new adventure to see hope and light restored to the heart of the community.
- The PCCs of St Mary's Leyton and All Saints Leyton are currently working in partnership to see the mission and ministry of their parishes thrive.
- The Parish of St Leonard's Shoreditch (Charity No. 1139673). Registered office: St Leonard's Church, 119 Shoreditch High Street, E1 6JN. Shoreditch Church comprises the parish church, a parish hall and a vicarage.
- Dedicated to St Leonard, worship has been conducted on the site of Shoreditch Church for many centuries. Known as the 'Actor's Church' because of the area's great significance in the early development of English theatre, the present building (built in 1741) has long stood prominently at the heart of its community, for centuries being the tallest for miles around, topped by the famous Shoreditch Bells. In 2020 SAINT began a new partnership with the iconic parish church of Shoreditch to create an exciting new hub for outreach in one of East London's most vibrant boroughs. This collaboration will look to deliver a ten-year regeneration plan for the parish and see a thriving St Leonard's Church serving as a beacon of hope to those around it.
- The Parish of All Saints West Ham (Charity No. 1159466). Registered office: All Saints West Ham, Church Road, E15 3HU. West Ham Church comprises the parish church and a vicarage.
- All Saints, West Ham is in the heart of Newham, and Christian worship has thrived here since 1130. West Ham Church has been part of SAINT since September 2020. We love and serve our local community, create spaces for people to belong, and share the good news of Jesus Christ at every opportunity.

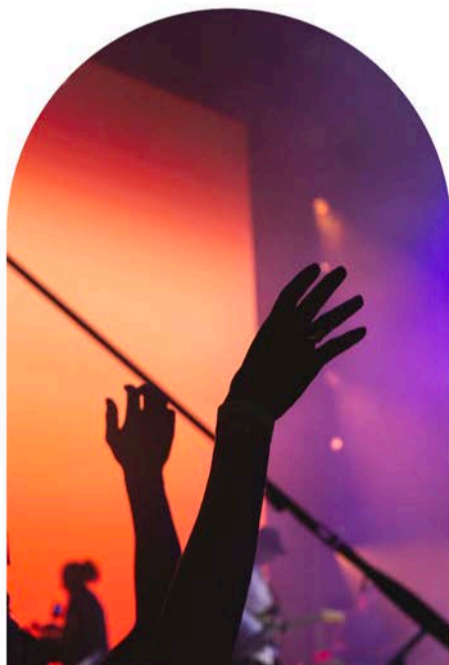


RELATIONSHIPS

We're proud to partner with several friends, networks, and organisations that share our vision of bringing hope.

SAINT is an Anglican Church in East London serving across two episcopal areas within two diocese: St John at Hackney, St Luke's Homerton, St Barnabas Homerton and St Leonard's Shoreditch are part of the Stepney Area of London Diocese; and, St Mary's Leyton and All Saints West Ham are part of the Barking Area of Chelmsford Diocese.

We're proud to be part of the HTB church planting network, working with the Revitalise Trust to serve the wider church.



FINANCES

SAINT is one church with multiple Church of England parishes, across East London, which are legally and financially independent charities that work together in collaboration. Each location has its own PCC and runs their own finances, supported by SAINT's incredible Finance Team and Central Services.



FOR THE
People **OF**
EAST LONDON